

# ILLINOIS VALLEY LANDSCAPE ASSESSMENT

## What do *YOU* think?

Here is a chance for Illinois Valley residents to tell their stories, and to talk about ideas to make forest health and community health better.

Whether you have been here for two years or sixty-two years, your experiences and ideas can help shape a community vision for a better future.

Together we can highlight the issues and needs that are most important to local people, but we need *your* help!

### Illinois Valley Landscape Assessment Team Members

Kevin Preister  
Marques Freeman  
Kenny Houck  
Susan Chapp  
David Steiner

Funding to conduct the Illinois Valley  
Landscape Assessment is provided by:

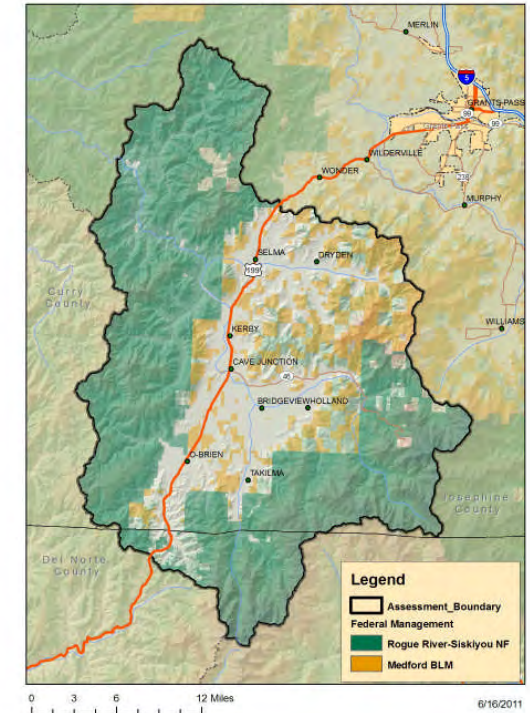
The National Forest Foundation  
Josephine County Commissioners  
Title III grant  
Ford Family Foundation

### With Support from:

Josephine County Integrated Fire Plan Stewardship  
Group  
Josephine County GIS  
The Forestry Action Committee  
Oregon Solutions  
Jackson Josephine Local Coordinating Group of the  
National Fire Plan,  
Wild Rivers District Ranger  
Grants Pass Resource Area, BLM  
Southern Oregon Small Diameter Collaborative  
The Applegate Partnership  
The Nature Conservancy  
Lomakatsi Restoration Project  
KS Wild  
Southwest Oregon Regional Economic Development,  
Inc (SOREDI)  
Southern Oregon Resource Conservation and  
Development Council  
The USFS Collaborative Cadre  
U.S. Fish and Wildlife Service  
Oregon Department of Forestry

# ILLINOIS VALLEY LANDSCAPE ASSESSMENT

Illinois Valley  
Landscape Assessment Area



A project of the  
**Josephine County  
Stewardship Group**  
2011-2012

541-601-4797

## What are we doing?

Goal: Create a Landscape Assessment that integrates community and agency views into a comprehensive vision of forest management that will guide the next generation of Forest Service and BLM work.

The Assessment highlights local knowledge to help identify ideas, issues and concerns about public lands, jobs, the environment, and things that matter most to you.

CONCERNS are SHARED

We are listening and taking notes to recognize people's priorities and identify common topics.

IDEAS are COMPILED

Meetings will be scheduled to bring people and land managers together to create a comprehensive overview of the state of the community and the land. This has never been done here before... Please don't miss the opportunity to participate!

DATA are COLLECTED

We will have multiple GIS data layers outlining ecological, social and economic conditions in the IV.

COMMON GROUND is DEVELOPED

WE will be HEARD

## How are we doing it?

### Ways to Participate:

**One-on-one: you can be interviewed** by our team about how you use public land, and your vision for forest management. You can remain anonymous if you choose.

**Chat Sessions:** You can connect with friends and neighbors to talk over specific topics, such as off road vehicle use, forest dumping, fish habitat, or ideal forest projects. Specialists and local experts can be involved as desired.

**Work Groups:** We expect working groups to be short-lived and focused on topics of wide concern such as:

- a. Community-based guidance on next generation public land projects;
- b. A workable Eco-tourism strategy for the Illinois Valley as it relates to public lands;
- c. Market development to optimize use of forest products and ensure local jobs and business;
- d. Monitoring results to ensure desired outcomes.

**Quarterly Organizational Meetings:** Every three months, our agency partners will meet in Cave Junction with local residents to review progress and to guide next steps.

## How will it help?

The Josephine County Stewardship Group was established in 2004 to bring community members and land managers together to collaborate in developing forest restoration, stewardship and fuels reduction projects to create jobs, harvest timber, and protect communities from unwanted fire.

The Illinois Valley Landscape Assessment provides residents with a unique opportunity to help develop community-based guidelines for public land stewardship, recreation and job creation into the future.

Land managers have committed to reviewing the Illinois Valley Landscape Assessment when planning projects on public land.

The Illinois Valley Landscape Assessment will help us find common ground and move forward as a community towards a better future, where your voice matters!